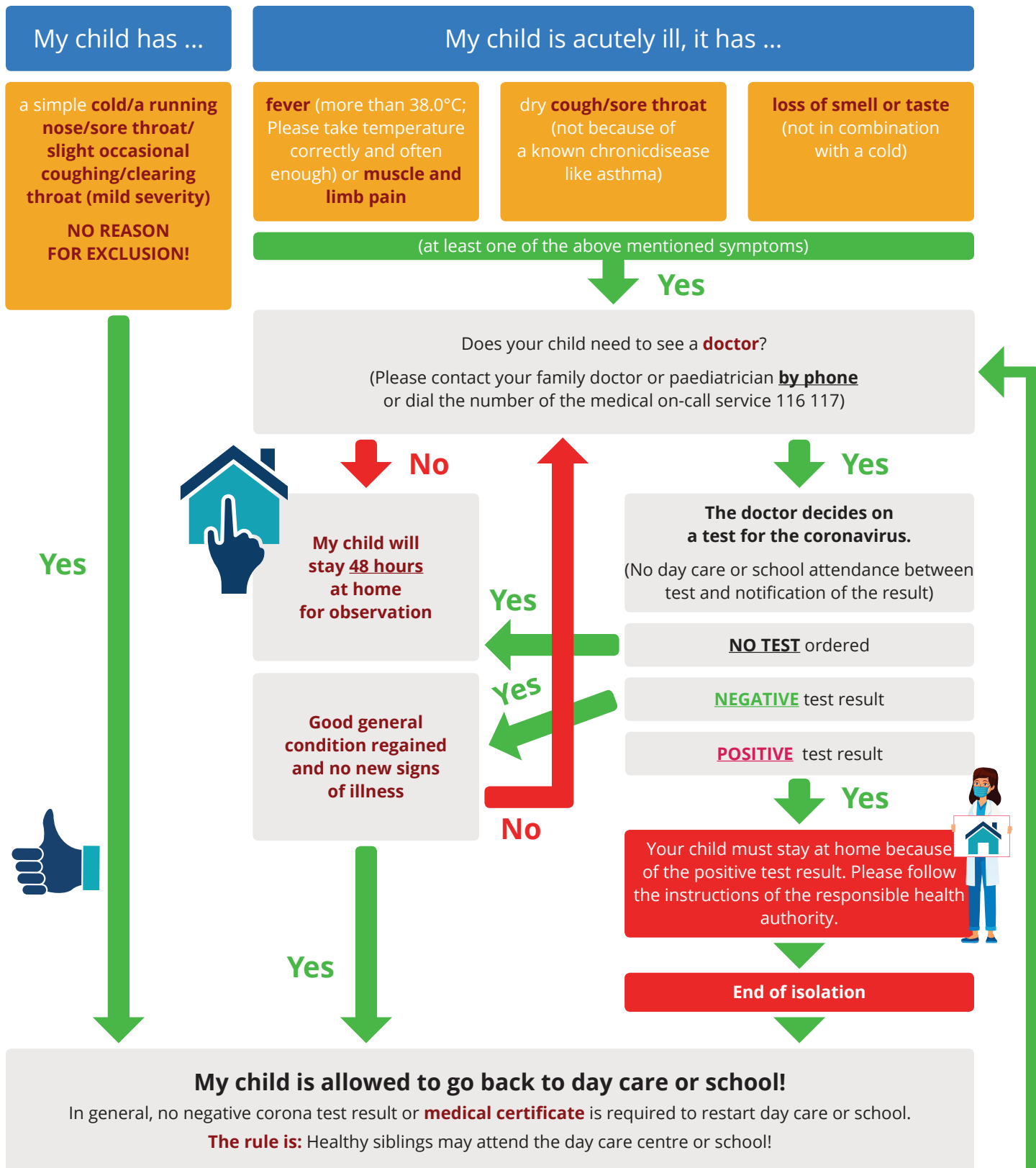


RECOMMENDATION

Signs of illness: Can my child go to day-care or school?



Important! If further signs of illness occur during day care/school attendance, the following applies:

If your child shows signs of illness, please contact your day care centre or school immediately to report your child as sick and to agree on the further procedure. Please remember that there is a common responsibility of parents and the day care centre or school to protect all children and staff and their families from infection.